

Straphangers Campaign

Q SUBWAY LINE PROFILE



Straphangers Campaign
MetroCard Rating **\$1.40**

The Q line ranks tied for 13th best of the 19 subway lines rated by the Straphangers Campaign. Our ranking is based on the MTA New York City Transit data below, using a method described at www.straphangers.org.

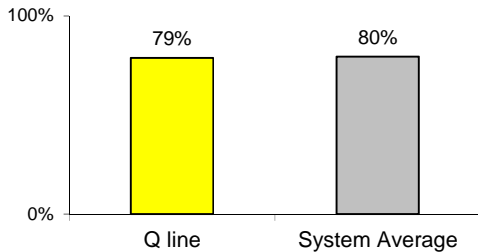
The Q line is scheduled to come less often than most subway lines...

scheduled minutes between weekday trains
as of December 2013

	AM Rush	Noon	PM Rush	Overnight
Q line	7:15	10	7:45	20
System Average	5:29	8:24	6:02	20

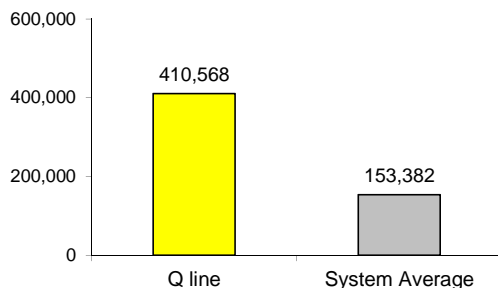
but arrives with near-average regularity.

% of trains arriving at regular intervals
--weekday "wait assessment"--
between 6 am and midnight



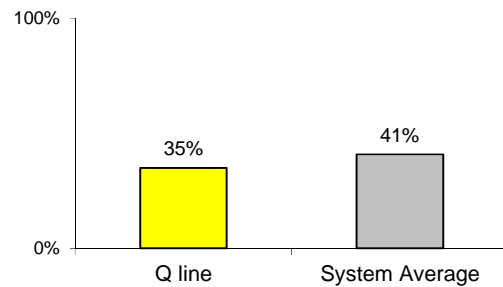
Cars on the Q break down much less often than those on the average line.

miles traveled between delays caused by
mechanical failures, 2013



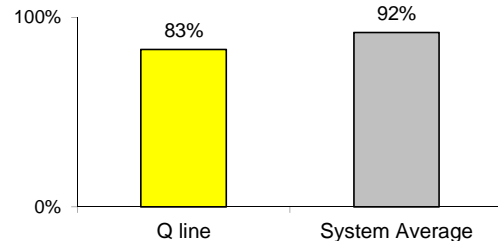
You're less likely to get a seat on the Q.

% of passengers with seats at most crowded point
during rush hour



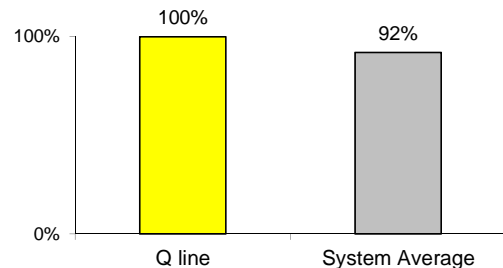
The Q line is the system's least clean line...

% of cars with 'light or no interior dirtiness' as defined
by NYC Transit



but it performs perfectly on in-car announcements.

% of cars with correct announcements as defined by
NYC Transit



Questions about your line? Suggestions? Complaints? -- Call 511