

# Straphangers Campaign

## B SUBWAY LINE PROFILE

The B line ranks tied for 13th best of the 19 subway lines rated by the Straphangers Campaign. Our ranking is based on the MTA New York City Transit data below, using a method described at [www.straphangers.org](http://www.straphangers.org).



Straphangers Campaign MetroCard Rating **\$1.40**

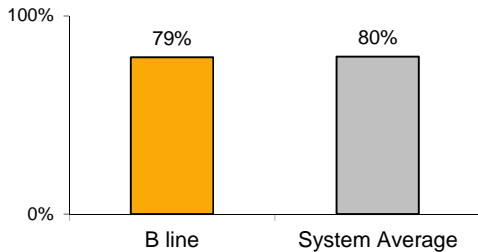
### The B line has a below-average amount of daytime service, and doesn't run at night.

scheduled minutes between weekday trains  
as of December 2013

	AM Rush	Noon	PM Rush	Overnight
<b>B line</b>	<b>8</b>	<b>10</b>	<b>8:15</b>	<b>-</b>
<b>System Average</b>	<b>5:29</b>	<b>8:24</b>	<b>6:02</b>	<b>20</b>

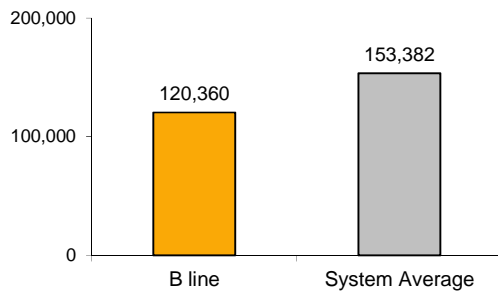
### The B arrives with near-average regularity...

% of trains arriving at regular intervals  
--weekday "wait assessment"--  
between 6 am and midnight



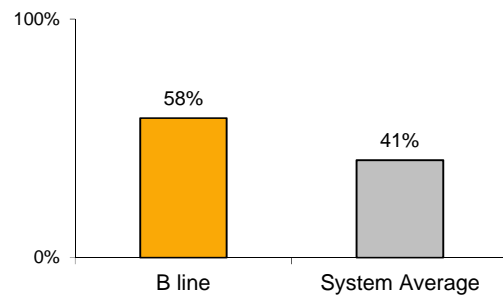
### but its cars break down more often than those on the average line.

miles traveled between delays caused by  
mechanical failures, 2013



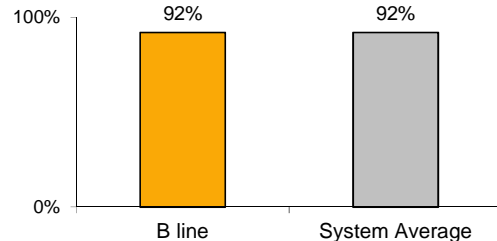
### You're more likely to get a seat on the B.

% of passengers with seats at most crowded point  
during rush hour



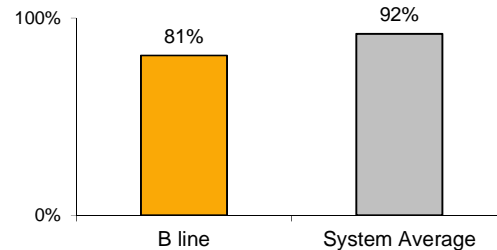
### The B is as clean as the average line...

% of cars with 'light or no interior dirtiness' as defined  
by NYC Transit



### but it performs below average on in-car announcements.

% of cars with correct announcements as defined by  
NYC Transit



Questions about your line? Suggestions? Complaints? -- Call 511