

Straphangers Campaign

2 SUBWAY LINE PROFILE



Straphangers Campaign MetroCard Rating \$1.30

The 2 line ranks worst of the 19 subway lines rated by the Straphangers Campaign. Our ranking is based on the MTA New York City Transit data below, using a method described at www.straphangers.org.

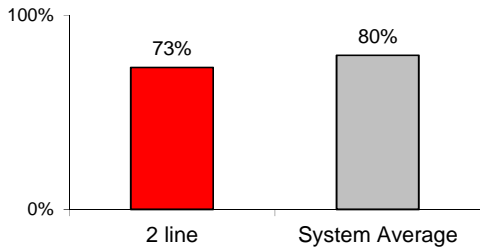
The 2 line has an average amount of scheduled service...

scheduled minutes between weekday trains as of December 2013

	AM Rush	Noon	PM Rush	Overnight
2 line	5:30	8	6:30	20
System Average	5:29	8:24	6:02	20

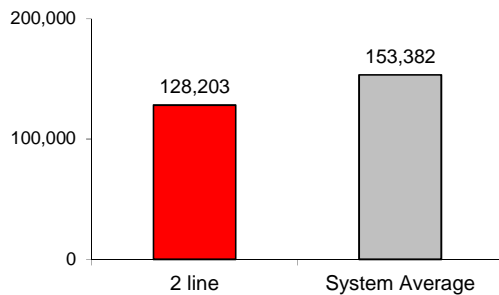
but arrives with regularity less often than the average line.

% of trains arriving at regular intervals --weekday "wait assessment"-- between 6 am and midnight



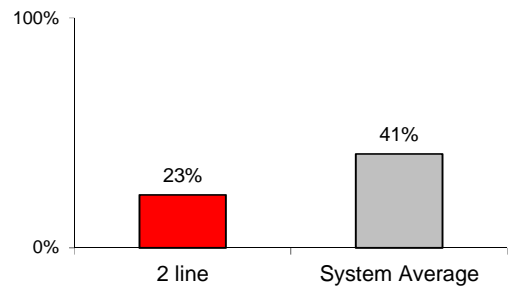
Cars on the 2 break down more often than those on the average line.

miles traveled between delays caused by mechanical failures, 2013



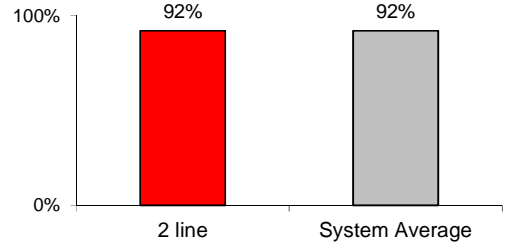
You're least likely to get a seat on the 2.

% of passengers with seats at most crowded point during rush hour



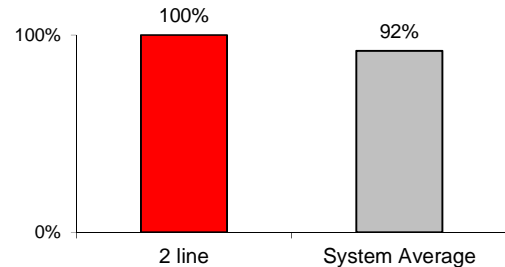
The 2 is as clean as the average line...

% of cars with 'light or no interior dirtiness' as defined by NYC Transit



and performs perfectly on in-car announcements.

% of cars with correct announcements as defined by NYC Transit



Questions about your line? Suggestions? Complaints? -- Call 511